

ROFYCOM RE

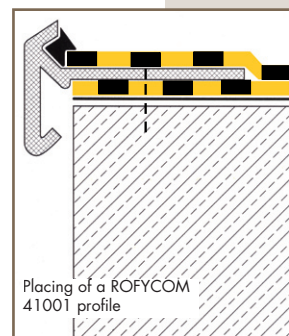
Composite roof edge profile

Description

- ▶ ROFYCOM ROOF EDGE, a roof edge profile using a high-grade composite material obtained by pultrusion. This continuous technique is based on the impregnation of glass fibres with polyester resin, resulting in an extremely hard-wearing material.

Advantage

- ▶ Non-deformable material, prevents cracks in the roofing membrane.
- ▶ Corrosion-proof.
- ▶ Colour-fast and non-scratching.
- ▶ The exceptionally low coefficient of expansion means no expansibility-related problems with unusually high temperature differences.
- ▶ Coloured in the mass.
- ▶ Available in anthracite. Other RAL colours are available on request.
- ▶ Easily tolerates brief contact with a naked blowpipe flame.
- ▶ Connections and corners guarantee a perfect attachment. Besides which, the DERBIMASTIC S connection paste seal prevents possible leaks and provides perfect durable waterproofing.

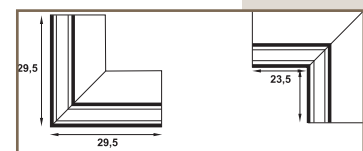
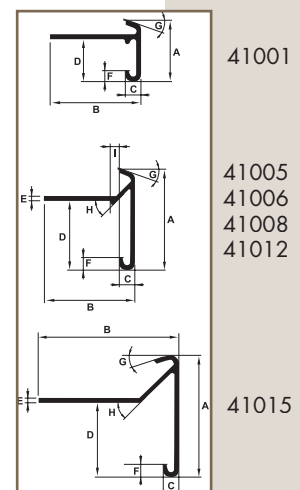


Technical information

Different available profiles

Profile type	Different parts								
	A	B	C	D	E	F	G	H	I
41001	40	60	9	27	2	6	10°	45°	5
41005	50	80	9	30	2	7	20°	45°	5
41006	65	60	9	45	2	7	20°	45°	5
41008	80	90	9	50,5	2	7	15°	45°	-
41012	100	60	9	80	2	7	20°	45°	5
41015	150	60	9	130	2	7	20°	45°	5

Dimensions in mm



Packaging

Box with 10 roof edges of a length of 3 metres, 11 connection pieces and 4 elbows or corner pieces.

Colour

Anthracite



WWW.DERBIGUM.COM